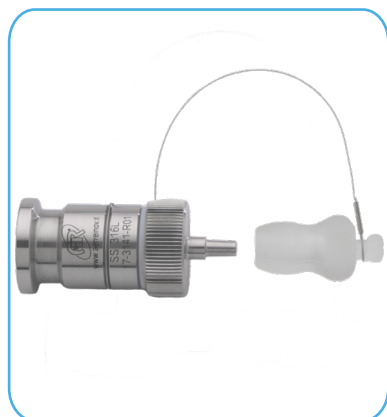


RPS Sanitary Sampling Valve



The RPS sanitary sampling valves are completely autoclavable, they allow for sampling at the center of the line, obtaining the desired representative sample. Inexpensive and easy to use, these sampling valves in AISI 316L can be installed on distribution loops or tanks, they are available with CLAMP, butt weld or gas threaded connections.

The inlet connection is available with flat face or with insertion tube.



ADVANTAGES:

- ✓ Can be sanitized in-line
- ✓ Autoclavable
- ✓ Easy to use and reliable
- ✓ High temperature and pressure resistant
- ✓ With removable dust protective cap
- ✓ Full material traceability
- ✓ Certified materials for Pharmaceutical use

APPLICATION:

Sanitary sampling valves suitable for installation on the tanks or process lines of Pharmaceutical, Food & Beverage, Cosmetics, Dairy and Fine Chemicals plants. These valves are the ideal solution to take a true representative sample of liquids.

Size range	1/2" - 3/4" - 1" - 1 1/2" - 2" - 2 1/2" - 3" - 4"
Stainless steel in contact parts Material	AISI 316L - 1.4404
Plug Material	Modified PTFE - Silicone - FKM
O-ring Material	Silicone - FKM - EPDM
Internal surface finish	Average Ra ≤ 0.76µm - Inlet clamp surface Ra ≤ 0.38µm
Working pressure rating	Vacuum + 10 barg
Max working temperature	150°C
Certifications	3.1 material certificates (in contact) according to UNI EN 10204 FDA USP Class VI other certificates on request

CONFIGURATOR



DATASHEETS



Last updates can be found on our website - www.aerreinox.it
In the interests of development of the product, we reserve the right to change the specifications without prior notice



INLET TYPE



Flat face



With deep tube $\varnothing 10 \times 1\text{mm}$
L.45mm

PROCESS CONNECTION



$\frac{1}{2}$ " - $\frac{3}{4}$ " Clamp ASME BPE/BS
4825

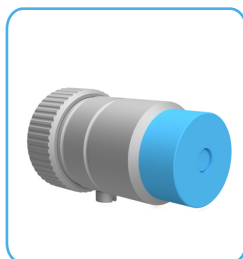
1" - 1 $\frac{1}{2}$ " Clamp ASME BPE/BS
4825

2" Clamp ASME BPE/BS 4825

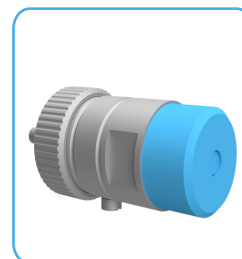
2" $\frac{1}{2}$ " Clamp ASME BPE/BS 4825

3" Clamp ASME BPE/BS 4825

4" Clamp ASME BPE/BS 4825



Butt Weld $\varnothing 19.05\text{mm}$

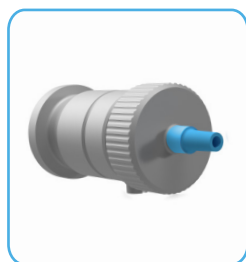


$\frac{1}{4}$ " Male Gas Thread - ISO228/1

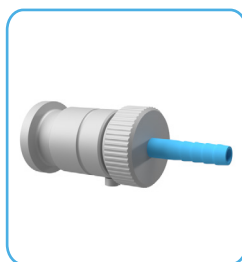
$\frac{3}{8}$ " Male Gas Thread - ISO228/1

$\frac{1}{2}$ " Male Gas Thread - ISO228/1

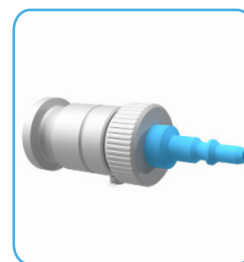
SAMPLING OUTLET CONNECTION



Luer Male



Hose Barb $\varnothing 6 \times 1\text{mm}$



Quick Connection O3

CONFIGURATOR



DATASHEETS



Last updates can be found on our website - www.aerreinox.it
In the interests of development of the product, we reserve the right to change the specifications without prior notice



SEALS



Silicone
Modified PTFE
FKM



Silicone
FKM
EPDM

OPTIONAL

- Electropolishing
- Deep tube special length
- Other Materials
- Other types of connections
- Customizable on request

For further details about codes and download of the drawings, visit our **CONFIGURATOR**

CONFIGURATOR



DATASHEETS



Last updates can be found on our website - www.aerreinox.it
 In the interests of development of the product, we reserve the right to change the specifications without prior notice